

# PACKAGE SEWAGE TREATMENT SYSTEM SEWAGE RECYCLING SYSTEM

## SEWAGE TREATMENT PROCESS

The treatment scheme proposed to treat raw sewage from various locations is split into three distinct parts.

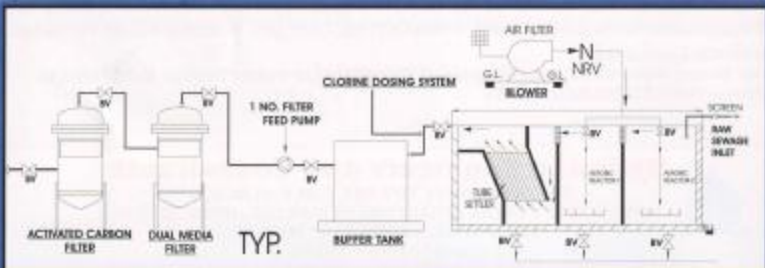
1. **Pre treatment**, comprises of screening and grit removal.
2. **Biological treatment** comprising of fluidized / fixed aerobic bioreactor, followed by clarification. This process dissolves organic matter that will be removed through a biological process called "fluidized / fixed bed bioreactor technology".
3. **Tertiary treatment** comprising by addition of chlorine to remove the E-coli/ Coliform, etc followed by filtration for residual suspended solids removal.



## AEROFLOW BIOLOGICAL TREATMENT TECHNOLOGY

AEROFLOW technology is the latest fourth generation for the Aerobic biological treatment of sewage and industrial wastewater. The moving / fixed media provides a large surface area within the aeration tank on which the aerobic bacteria could attach.

The biomass concentration in the aeration tank can be maintained much higher than the normal possible concentrations in absence of media, hence it allows the biological treatment process to be carried out in the aeration tank 2-3 times more compact and smaller in volume compared to the aeration tank with no media.

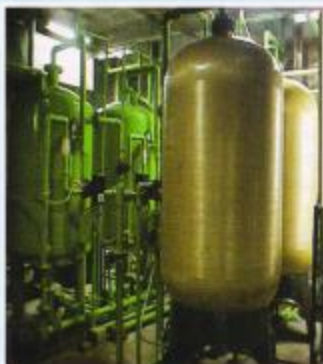


## SALENT FEATURES

- Compact in Size.
- State of Art Technology.
- Lower Running Costs.
- Low Maintenance.
- Ready to use.
- Small Foot Print.
- Latest State of the Art Technology.

## APPLICATIONS

- ❖ Townships and Housing Societies.
- ❖ Hotels and Holiday Resorts.
- ❖ High Rise Buildings
- ❖ Campsites.
- ❖ Off shore Platforms.
- ❖ Hospitals and Nursing Homes.



Sewage from Septic Tanks or Grey Water from Bathrooms is collected in a collection sump. This water is then processed through the Superior Fluidized / Fixed Media Aerobic Process. Subsequent tertiary treatment is carried out to achieve required quality of water as per the final application. The steady flow of Treated water can be used in **LAWNS, HORICULTURE, COOLING, TOWERS, TOILET FLUSHING** or Similar Applications.

The Treated Water could also be Ozonised, Ultrafiltered or treated through Membranes to achieve **HIGH STERILISED PURITY**.



## Hydratec Engineers and Consultants

307, PARAMOUNT TOWERS, C-17, C-BLOCK,  
COMMUNITY CENTRE JANAKPURI, NEW DELHI - 110058, (INDIA)

Ph.: 25611430, 51588086 FAX : 25524380

e-mail: hydratec@vsnl.net